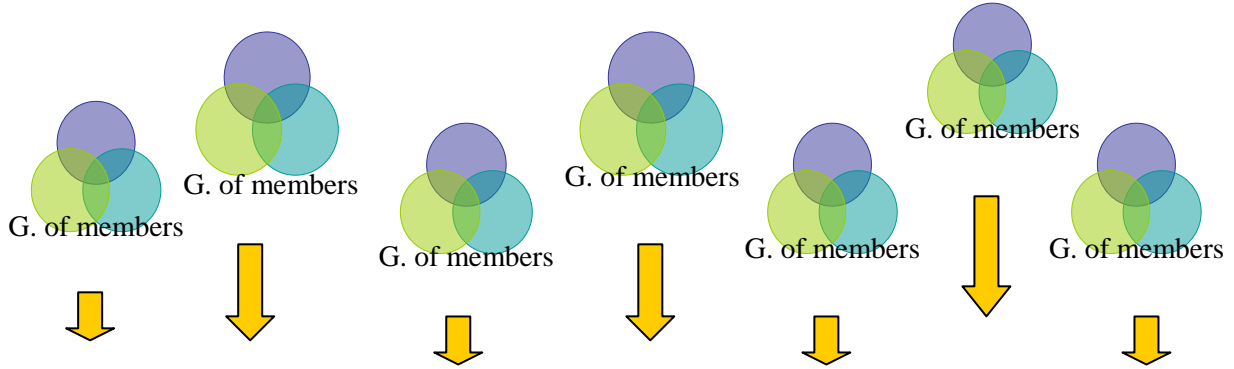
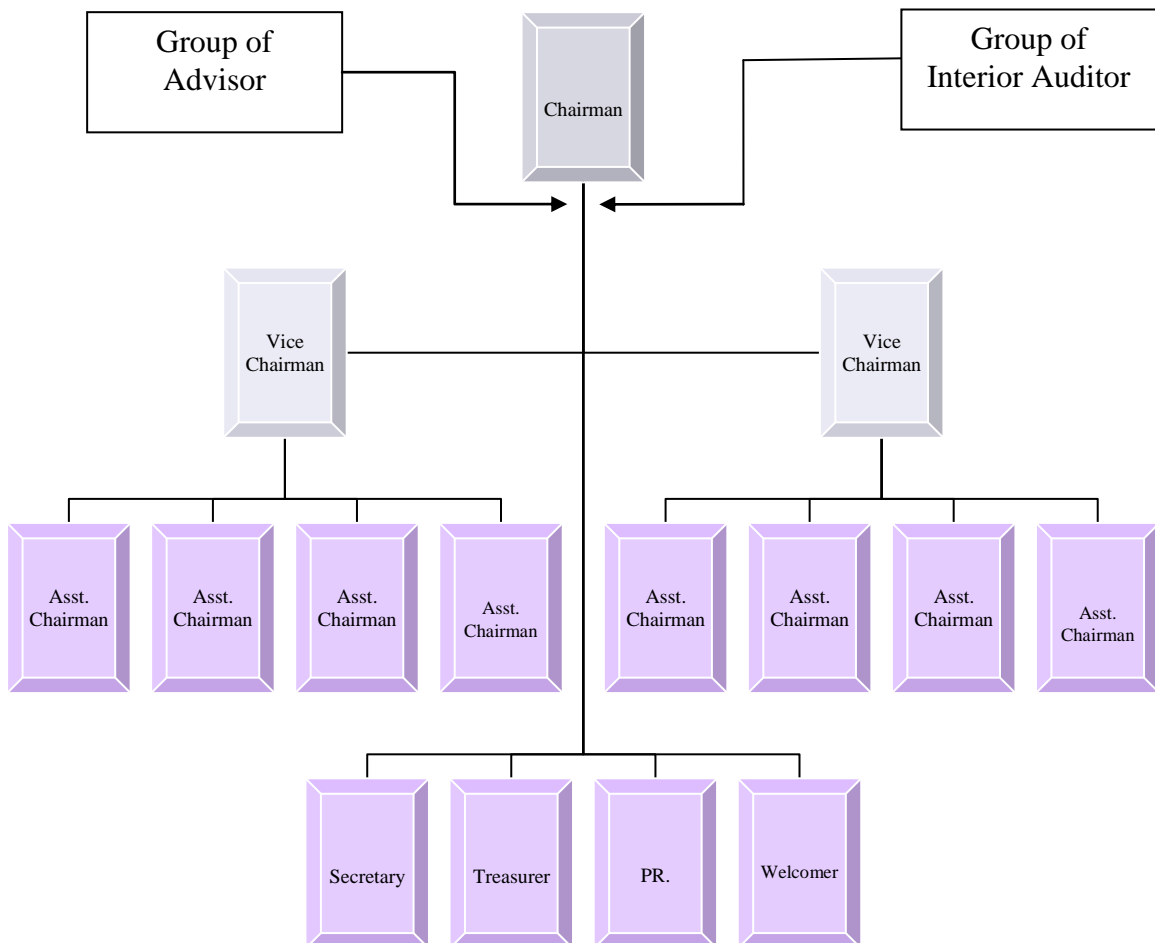


โครงสร้างการบริหารงานของสหกรณ์ The Administration Structure Of MFC



2 Representative / 1 Group to be Director of MFC by voting in the general meeting
All member can candidate to be Chairman by voting in the general meeting



MFC divide the members to be 7 groups. In each Group, there are 27-32 members, 7 members elected to be the director of the group, 2 members elected to be the representation of the group. In the general meeting, the representation is elected to be the director of MFC. The chairman is elected from the member who candidate from the group and voting in the general meeting.

When MFC get the Board of Members. Chairman get the right to provide the responsibilities of each director.

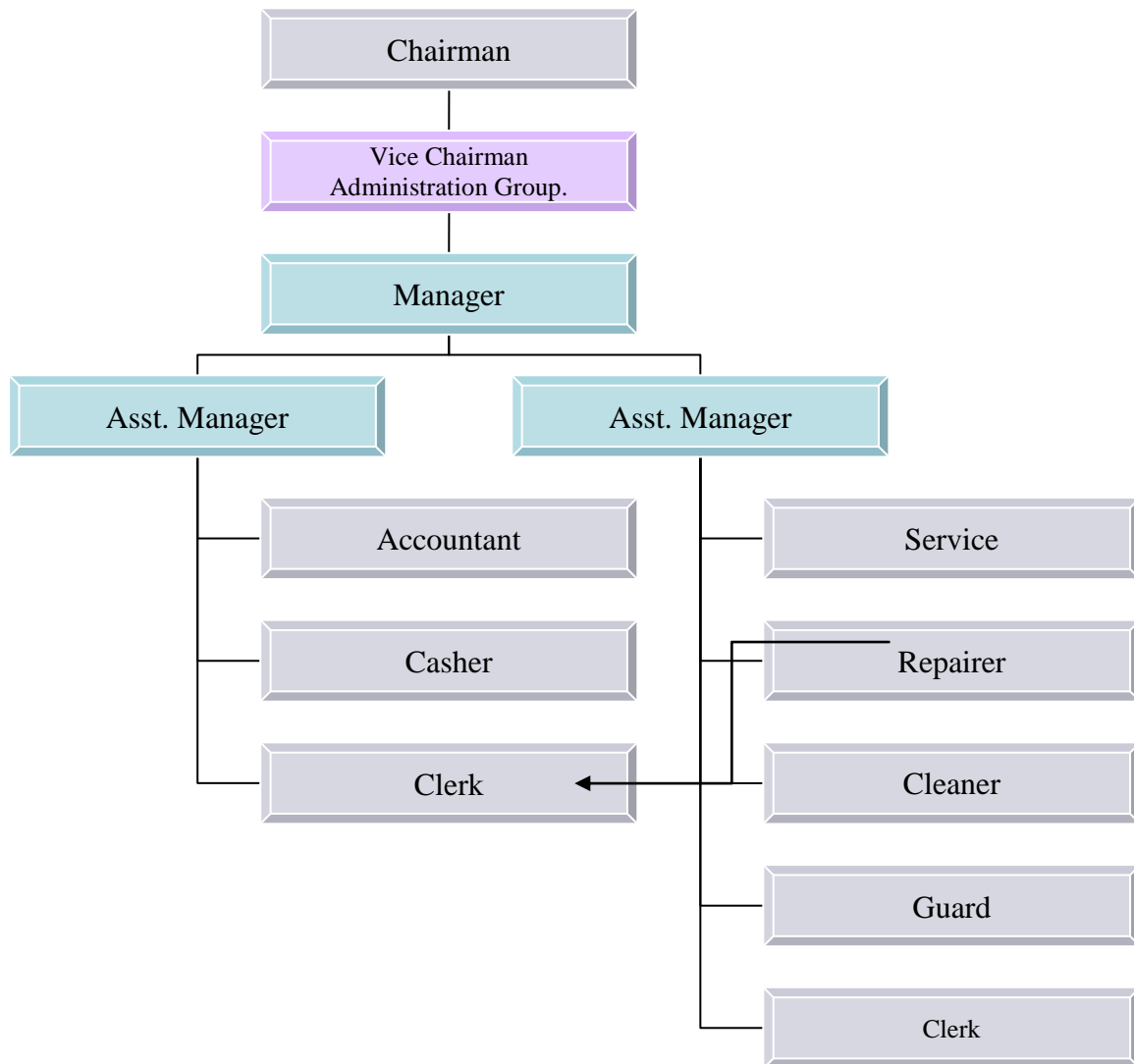


The Responsibilities of The Board of Members : MFC provide 2 part of operation , one is the interior operation (doing business and the operating of MFC) and the other is exterior operation (contacting to the other organization) there are 1 Vice Chairman, and 3 Assistance Chairman work in each part.

The responsibility of other director is the secretary & assistant, the treasurer & assistant, and the public relations & assistant.

Every team get 1 meeting per month and prefer the result of the meeting to the monthly meeting of the directing board.

The Management Structure Of MFC



In each year MFC will elect 5 members to be the Auditors and invite 7 persons who is expert in law, the cooperation and the other that concern with MFC to be the adviser of MFC.